

Practically speaking

Activities for WPG 'abstract' practical session

Brian Lee November 2021

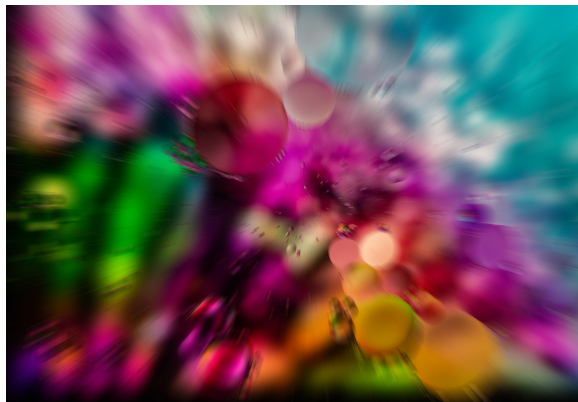
Practical setups

on offer

- Oil on water
- Totally lost your marbles
- Screw city
- CD Rainbow
- Folded paper
- Stress patterns
- Paperweight
- Pin picture

Oil on water

- Water dish illuminated from underneath with patterned light
- Oil droplets on surface of water
- Photograph resultant patterns on shallow depth of field (Low f stop number)
- Try zoom burst using manual control and telephoto to wide adjustment during exposure



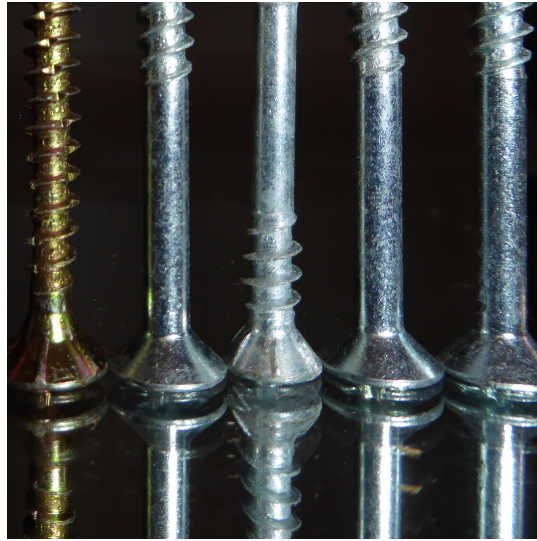
Totally marbles

- Photograph jar full of marbles
- Mix finger lights in with marbles for different lighting effect
- Try different aperture settings to get different depths of field
- Try zoom burst using manual control and telephoto to wide adjustment during exposure



Screw City

- Arrange various size screws on the mirrored base
- Use close-up or macro photography to exploit shapes and form
- Try adding additional mirrors for a kaleidoscope effect



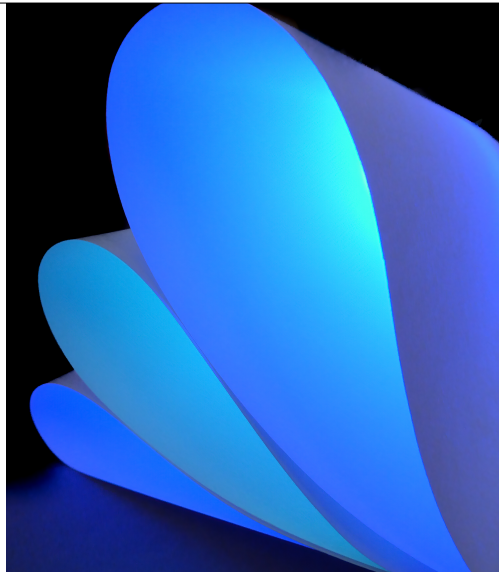
CD Rainbow

- Fan out a set of CDs, writing side up
- Try different directional lighting to get the rainbow effect



Folded Paper

- Sheets or leaves of paper held by clips or pegs
- Illuminate the structure with different lighting to see the resultant effect
- Try macro photography to get in close on the shapes and form



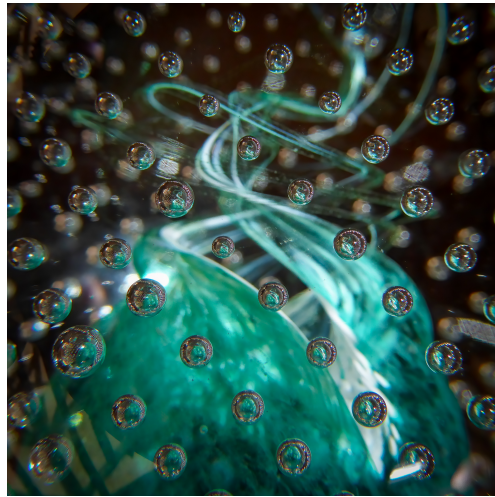
Stress Patterns

- Create an abstract form using clear plastic cutlery placed on a light table or tablet
- Use a polarising filter to see and photograph the rainbow patterns that will appear where the stress exists in the plastic
- The lens from a pair of sunglasses works just as well as a polarising filter



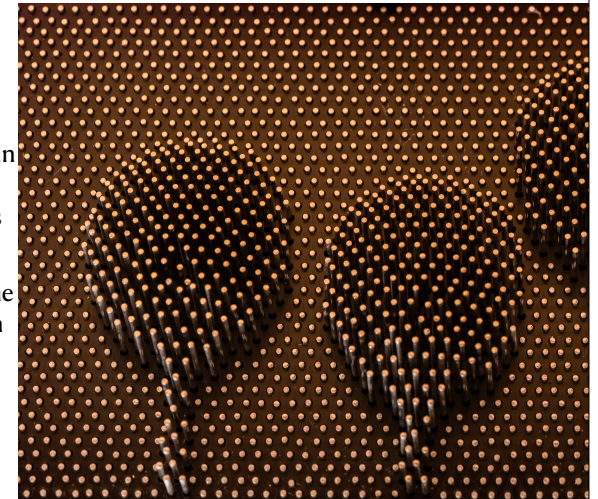
Paperweight

- Use a macro lens or photograph the paperweight close-up
- Concentrate on the small spheres within the paperweight since these will act like miniature lens balls or orbs capturing the surrounding scene



Pin picture

- Place various object impressions in the pin picture device and photograph from different points of view
- Lay the pin picture device on some everyday objects and photograph from the edge to capture their shape and form replicated in the pins



Checklist

What you need to bring

Camera

Tripod

Remote

Macro lens

Polarising filter or sunglasses

Camera manual